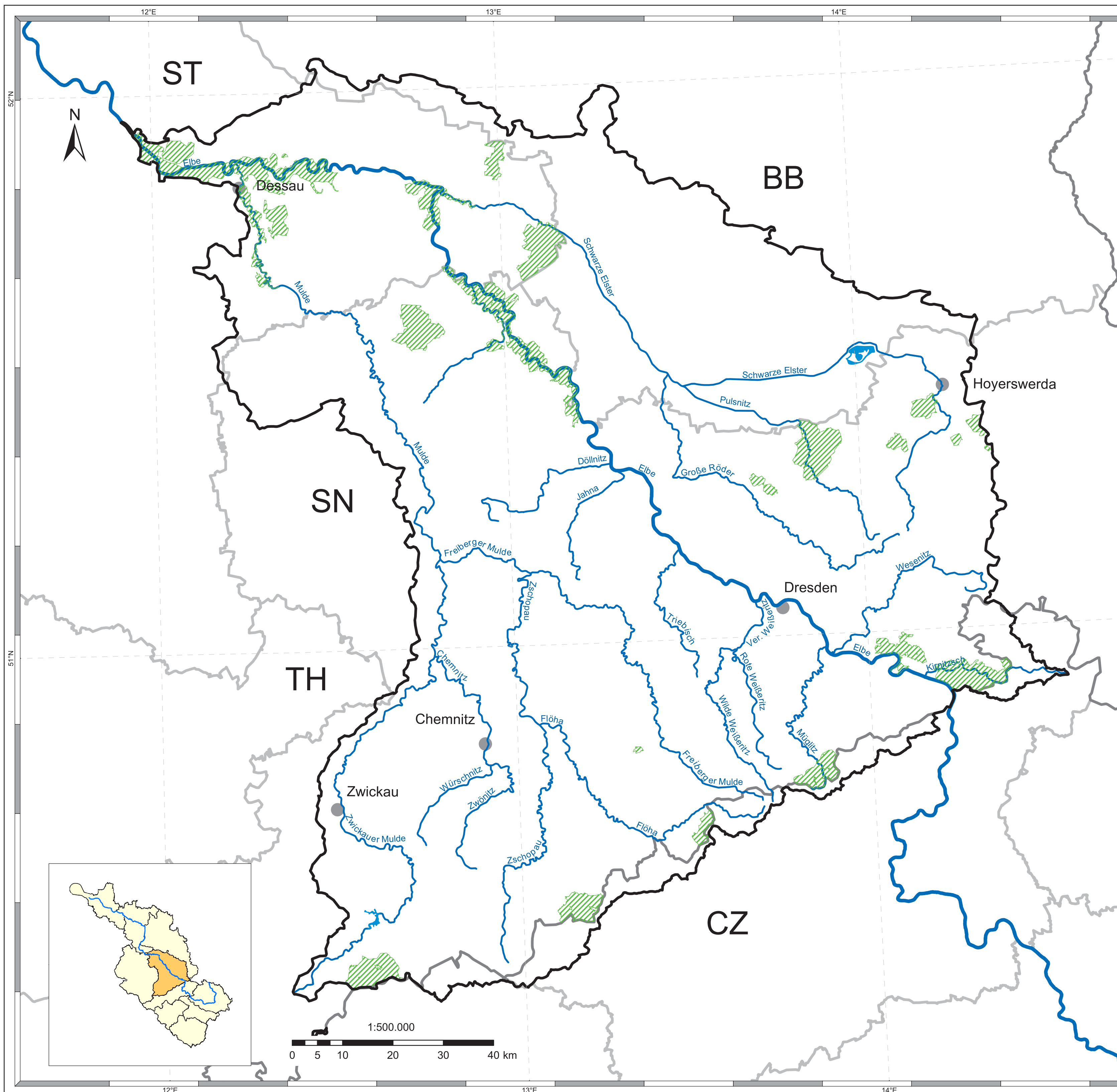









Flussgebietseinheit Elbe
 B - Bericht
 Koordinierungsraum
 Mulde - Elbe - Schwarze Elster
 Karte 11f: Vogelschutzgebiete (SPA)

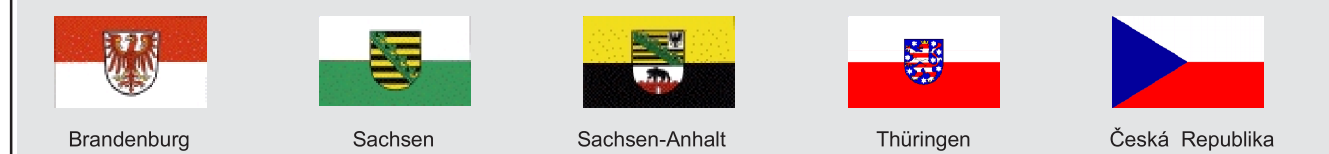


Legende

-  Vogelschutzgebiete
-  Grenze des Koordinierungsraumes
-  bedeutende Fließgewässer
-  bedeutende Seen
-  Staatsgrenzen
-  Ländergrenzen
-  Städte > 50.000 Einwohner

Datenquellen

Fachdaten:
 Zuständige Behörden in der Flussgebietseinheit Elbe



Basisdaten:

- This product includes geographical data licensed from European National Mapping Agencies.
 © EuroGeographics

- ATKIS(R), DLM1000; Copyright © Bundesamt für Kartographie und Geodäsie, 2003
 - ZABAGED® Zeměměřický úřad, Česká republika

Realisierung:



Stand:
 Januar 2005

Karte
 11f